

The image shows a modern interior space with a dark, textured carpet in the foreground. The background features a wall with a geometric pattern of light and dark grey triangular sections. A large, purple, tilted rectangular graphic overlay is positioned on the right side of the image. This overlay contains a repeating pattern of small white icons, including squares, circles, and lines. The word "CLICK" is written in a white, sans-serif font across the center of the purple overlay. A small white square is located at the top right corner of the purple overlay.

CLICK



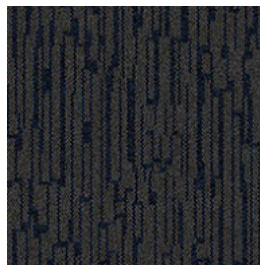
CONSTRUCTION	LOOP
PILE FIBER COMPOSITION	100% Nylon (Polyamide 6)
YARN TYPE	BCF
DYE METHOD	Solution Dyed
PILE WEIGHT	560 g/m ²
NUMBER OF TUFTS	197000/m ²
TUFTING GAUGE	1/10"
PRIMARY BACKING	Non-Woven
SECONDARY BACKING	StableShield - 100% Vinyl
TILE SIZE	50 cm x 50 cm
PILE HEIGHT	3.0 mm
TOTAL PILE HEIGHT	6.0 mm
PILE TREATMENT	INVISTA Anti-Soil Treatment
RECOMMENDED INSTALLATION	Quarter Turn or Brick

SPECIFICATIONS

COLOURLINE



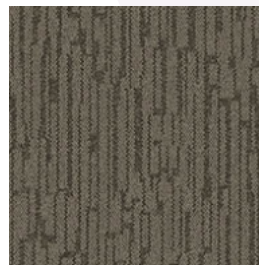
CLICK - 548



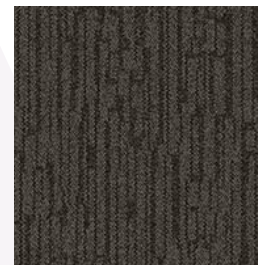
CLICK - 557



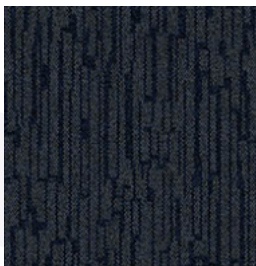
CLICK - 6543



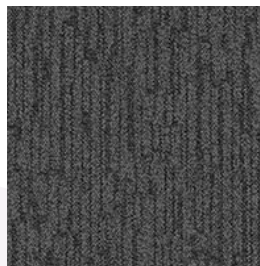
CLICK - 6545



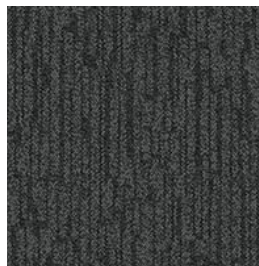
CLICK - 6547



CLICK - 6557



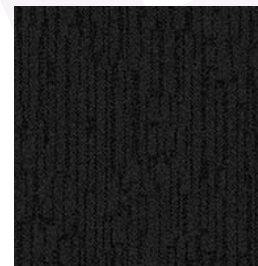
CLICK - 6571



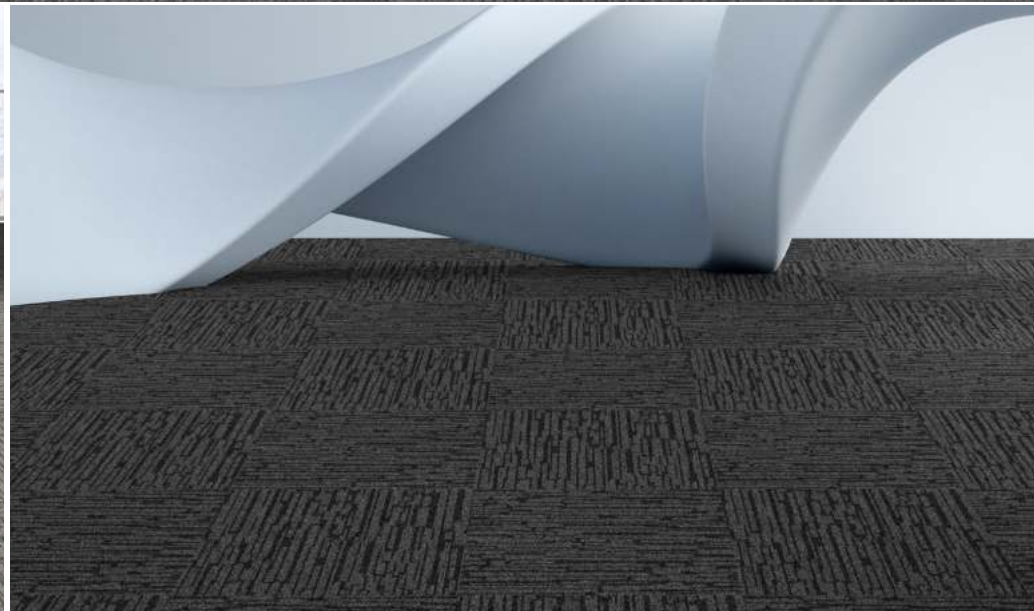
CLICK - 6576



CLICK - 6578



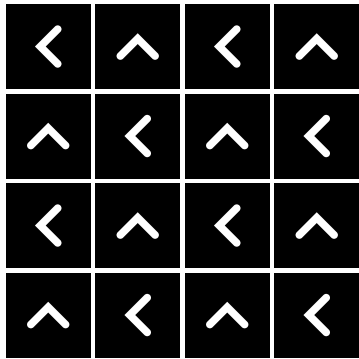
CLICK - 6579



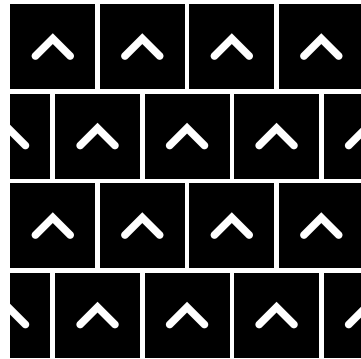


HOW TO INSTALL

QUARTER TURN



BRICK





Standard
CARPETS

www.standardcarpets.com